



US009540119B1

(12) **United States Patent**  
**Heinrich**

(10) **Patent No.:** **US 9,540,119 B1**  
(45) **Date of Patent:** **Jan. 10, 2017**

(54) **REMOTELY PILOTED AIRCRAFT  
TELEMETRY RECORDING USING THE  
COMMAND AND CONTROL DATA LINK  
SYSTEM AND RELATED METHOD**

(56) **References Cited**

U.S. PATENT DOCUMENTS

2007/0222665 A1\* 9/2007 Koeneman ..... G01S 13/9303  
342/29

\* cited by examiner

*Primary Examiner* — Basil T Jos

(74) *Attorney, Agent, or Firm* — Angel N. Gerzhikov;  
Donna P. Suchy; Daniel M. Barbieri

(57) **ABSTRACT**

A system and related method for reception and storage of a command and control (C2) data link between a control station and a Remotely Piloted Vehicle (RPV) for RPV operation. From the C2 data link, the system receives and stores command signals generated by the control station as well as telemetry data associated with and generated by the RPV. The system operates to compare the received telemetry data to 1) the command signal to assure RPV compliance, 2) stored information associated with the RPV to determine a RPV anomaly, and 3) stored information associated with a high value asset (HVA). Should the comparison reveal a threat to the RPV or HVA, the system alerts an authority to mitigate the threat. The system and method aggregates data associated with specific RPV type or operator to support several safety initiatives, methods used to perform predictive maintenance planning, and accident recreation and investigation.

(71) Applicant: **Richard E. Heinrich**, Marion, IA (US)

(72) Inventor: **Richard E. Heinrich**, Marion, IA (US)

(73) Assignee: **Rockwell Collins, Inc.**, Cedar Rapids, IA (US)

(\*) Notice: Subject to any disclaimer, the term of this patent is extended or adjusted under 35 U.S.C. 154(b) by 87 days.

(21) Appl. No.: **14/710,025**

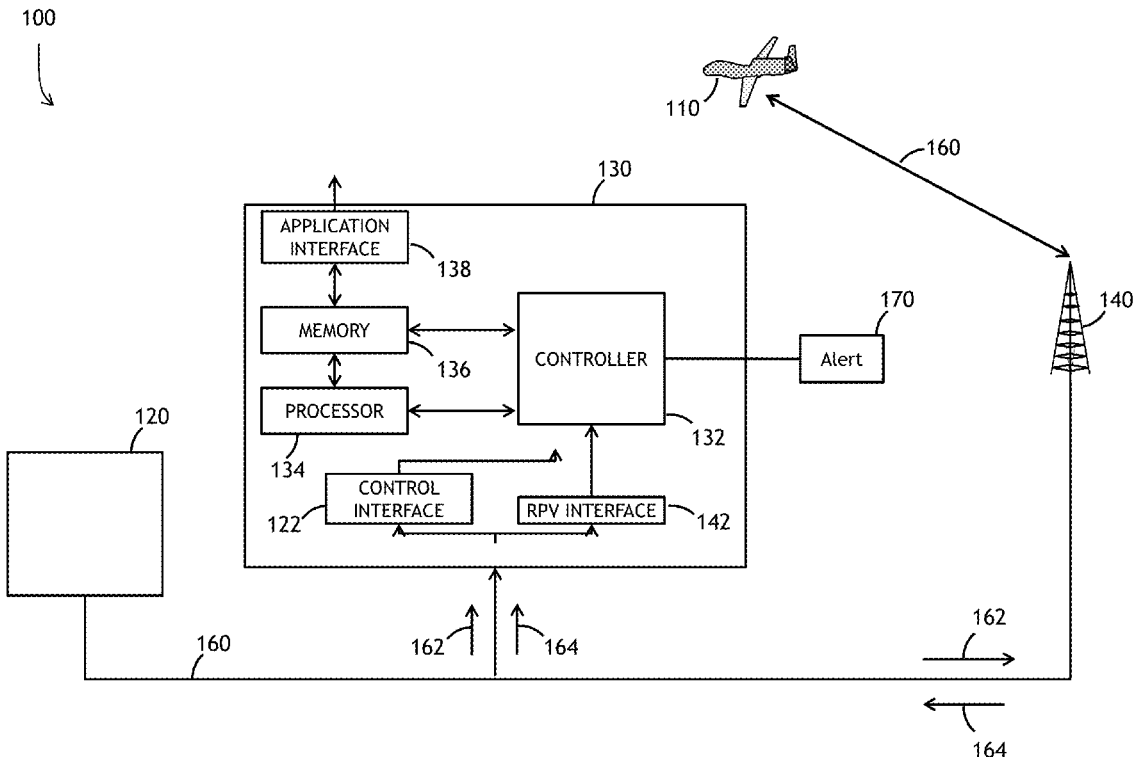
(22) Filed: **May 12, 2015**

(51) **Int. Cl.**  
**B64D 45/00** (2006.01)  
**H04W 4/02** (2009.01)

(52) **U.S. Cl.**  
CPC ..... **B64D 45/00** (2013.01); **H04W 4/028**  
(2013.01); **B64D 2045/0065** (2013.01)

(58) **Field of Classification Search**  
CPC ..... B64D 45/00; H04W 4/028  
See application file for complete search history.

**20 Claims, 8 Drawing Sheets**



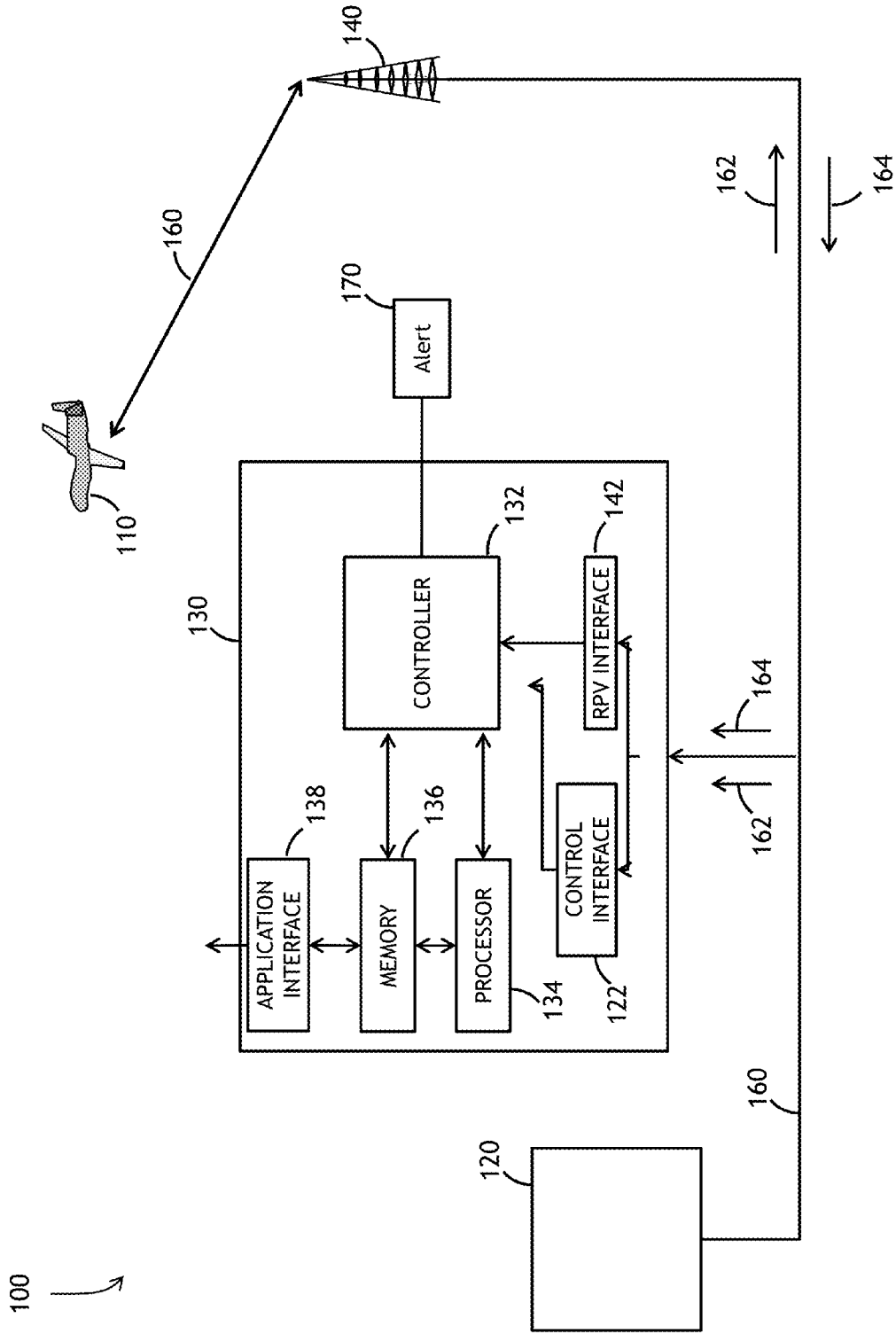


FIG. 1

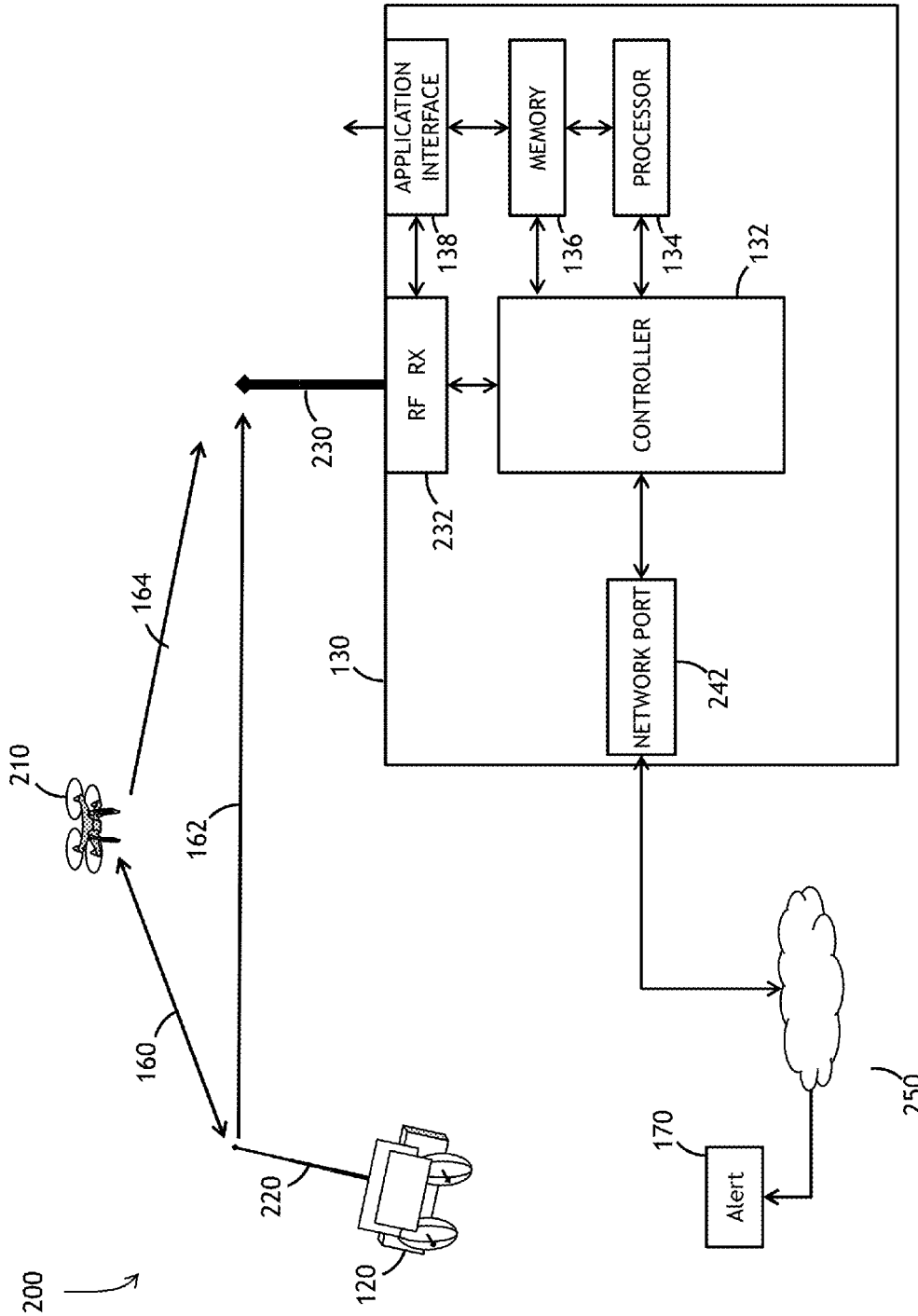


FIG. 2

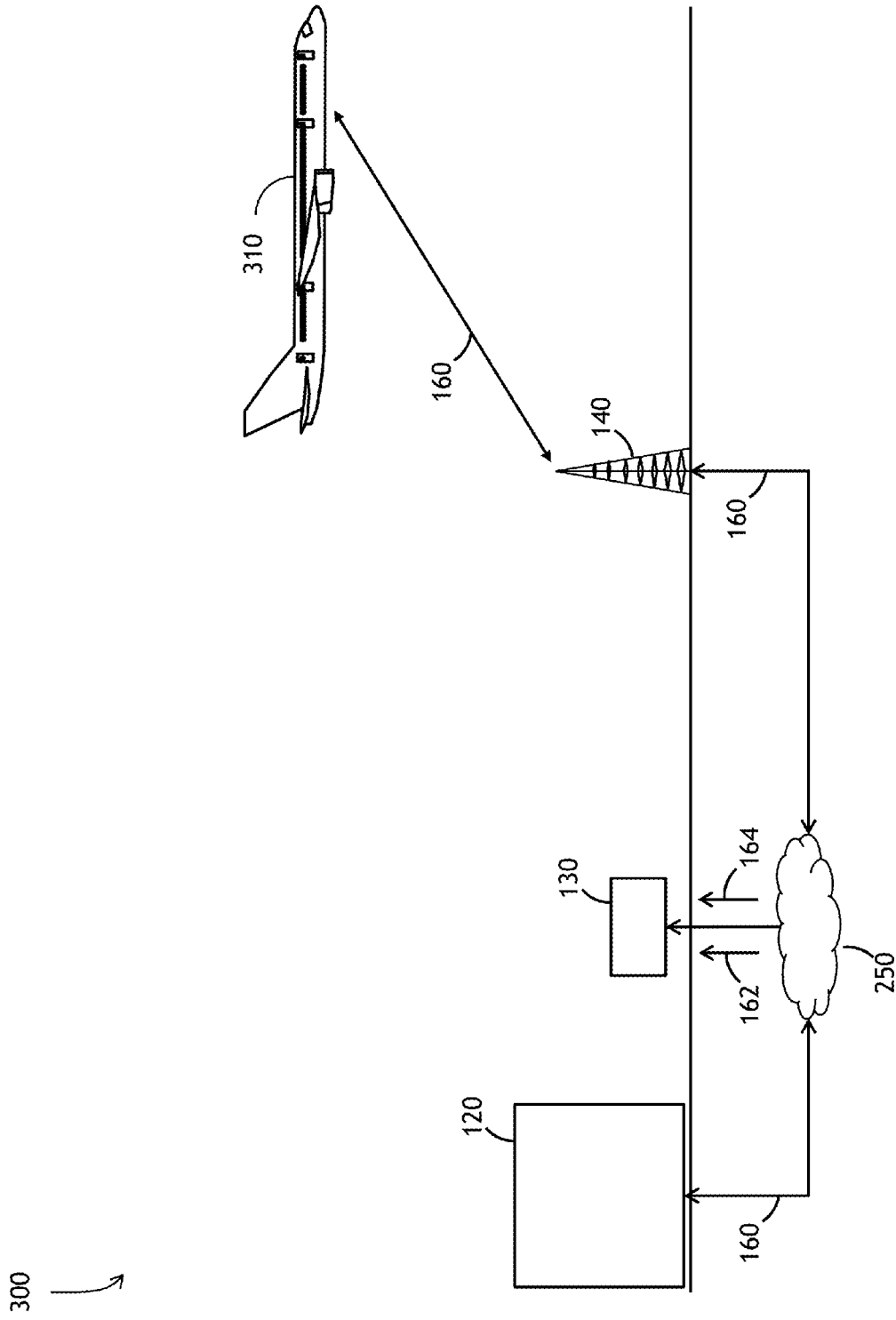


FIG. 3A

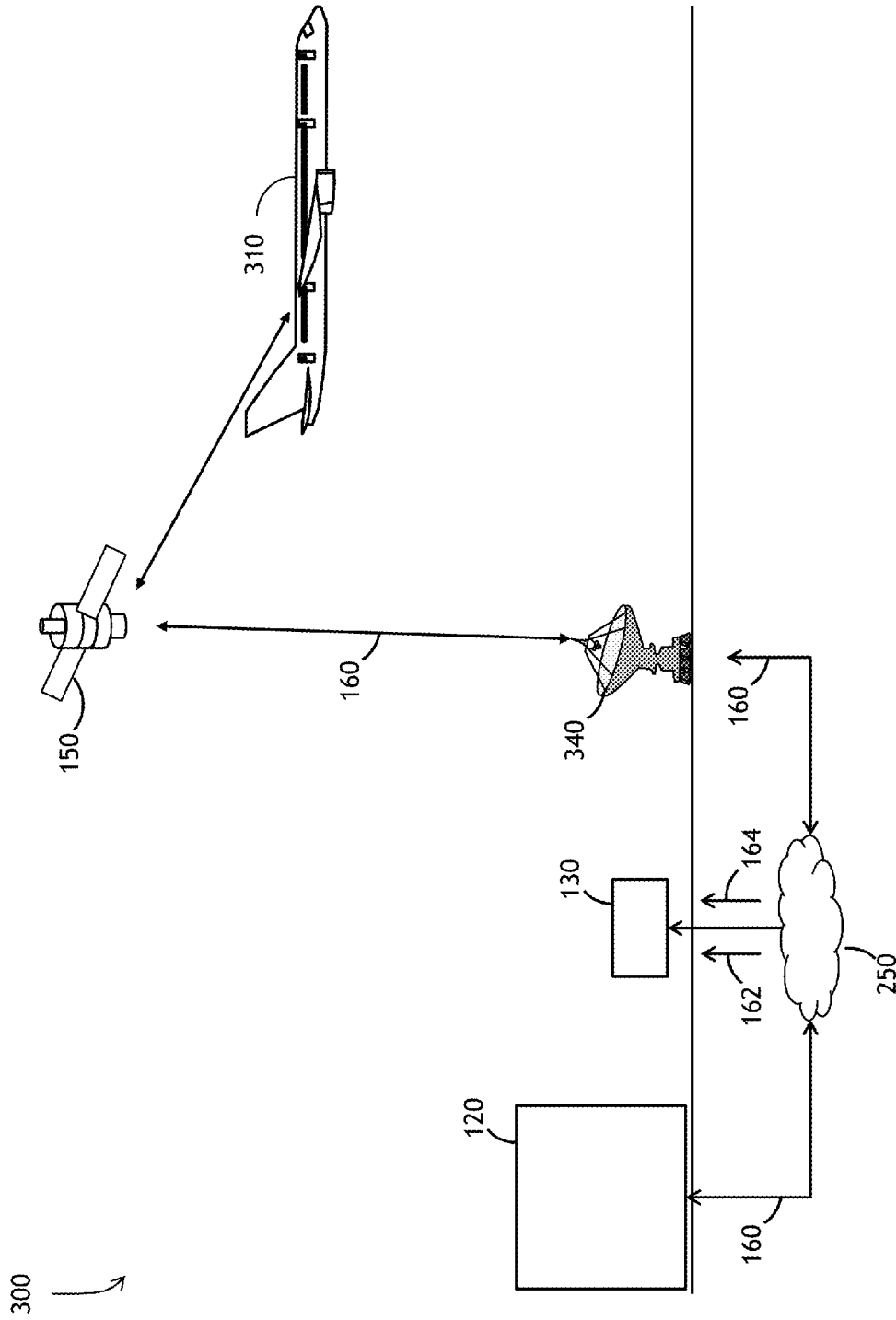


FIG. 3B

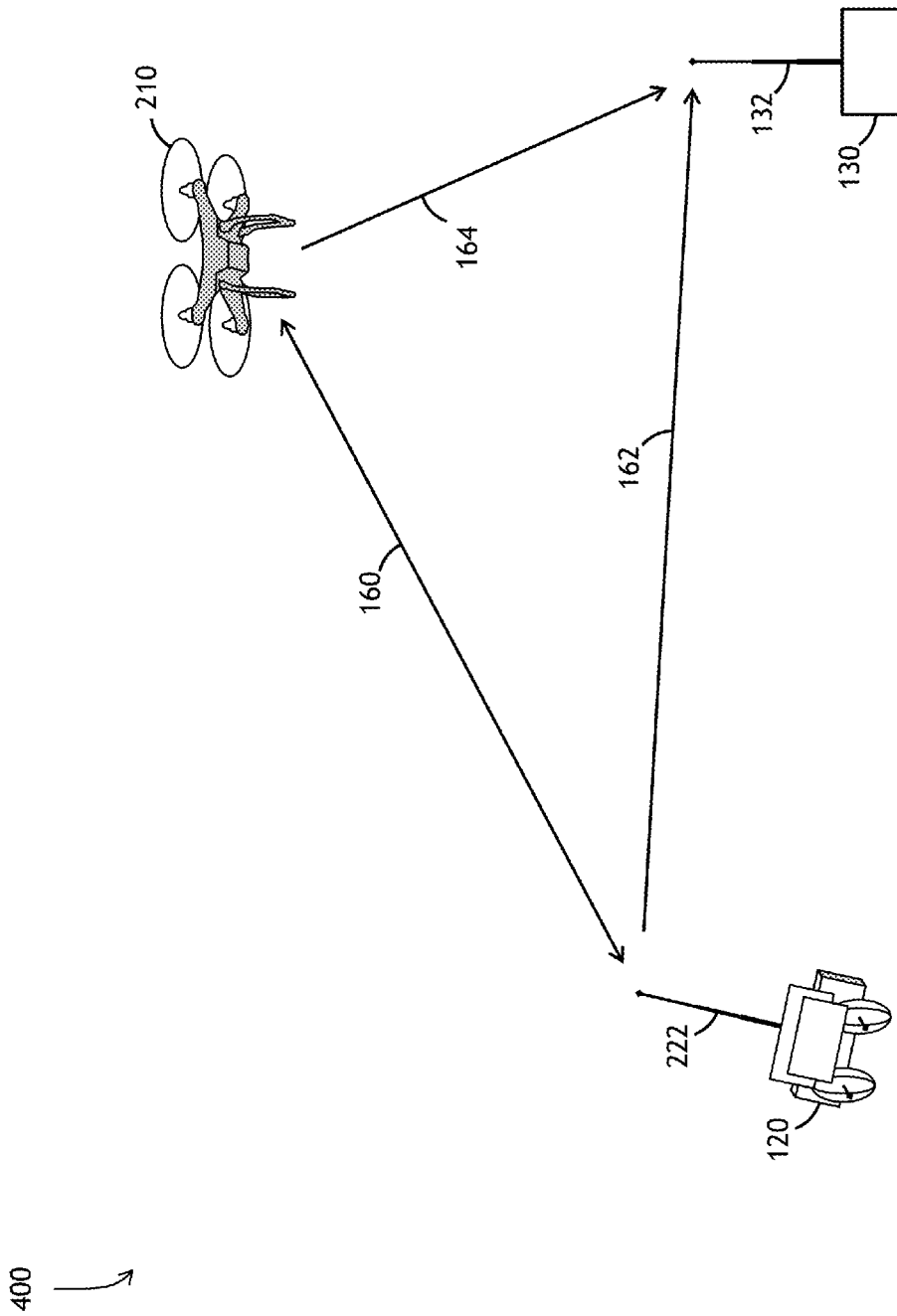


FIG. 4

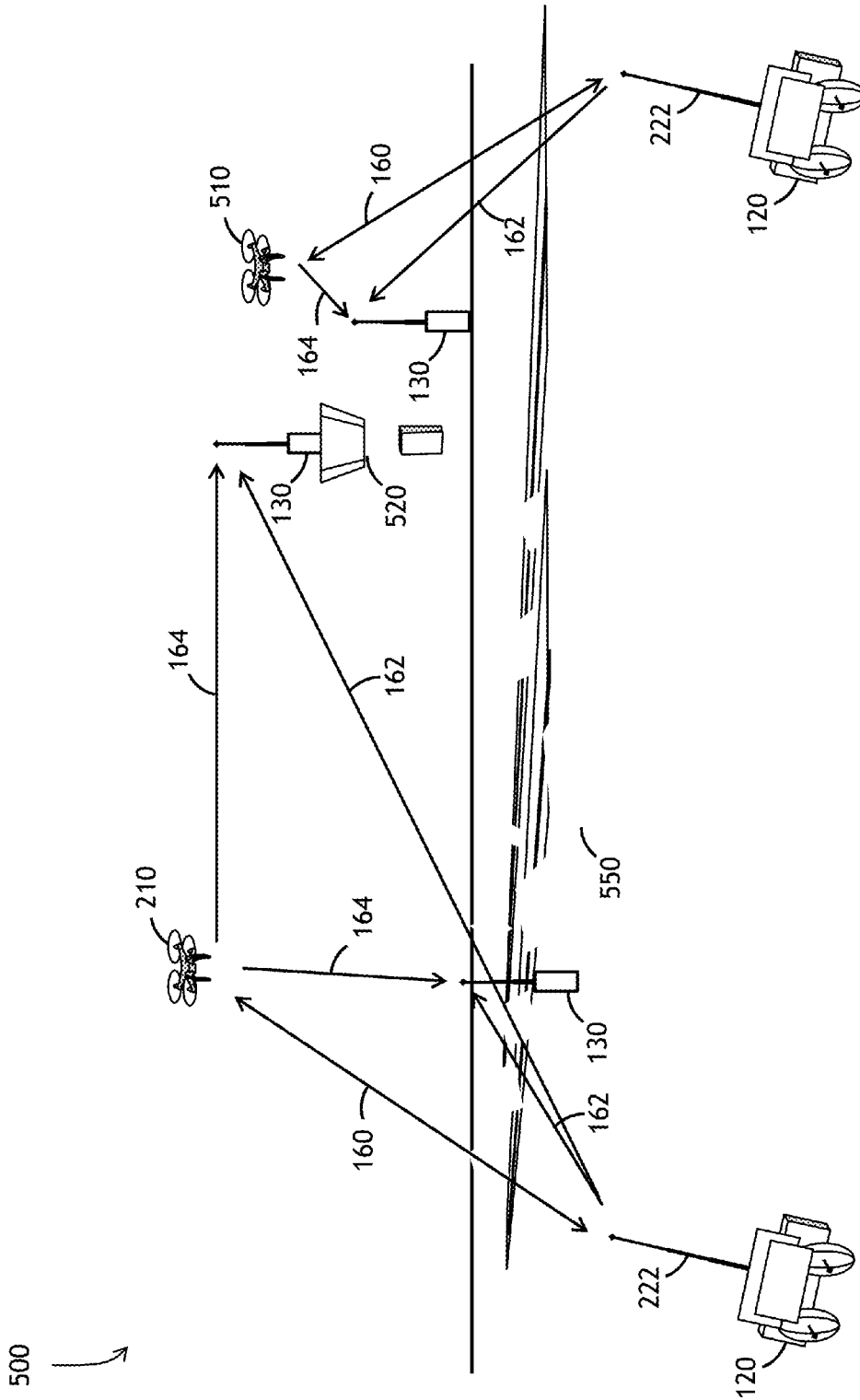


FIG. 5A

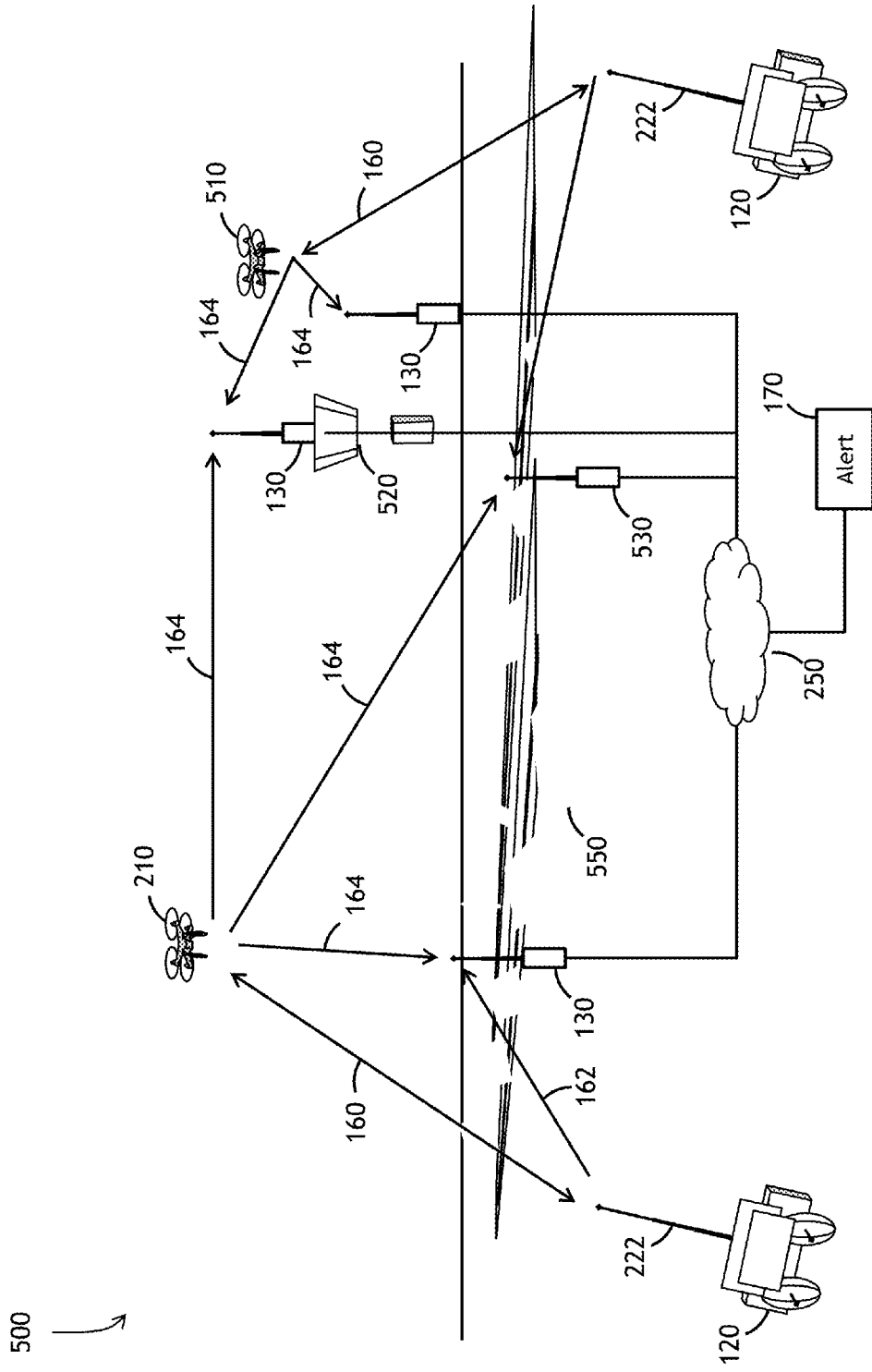


FIG. 5B



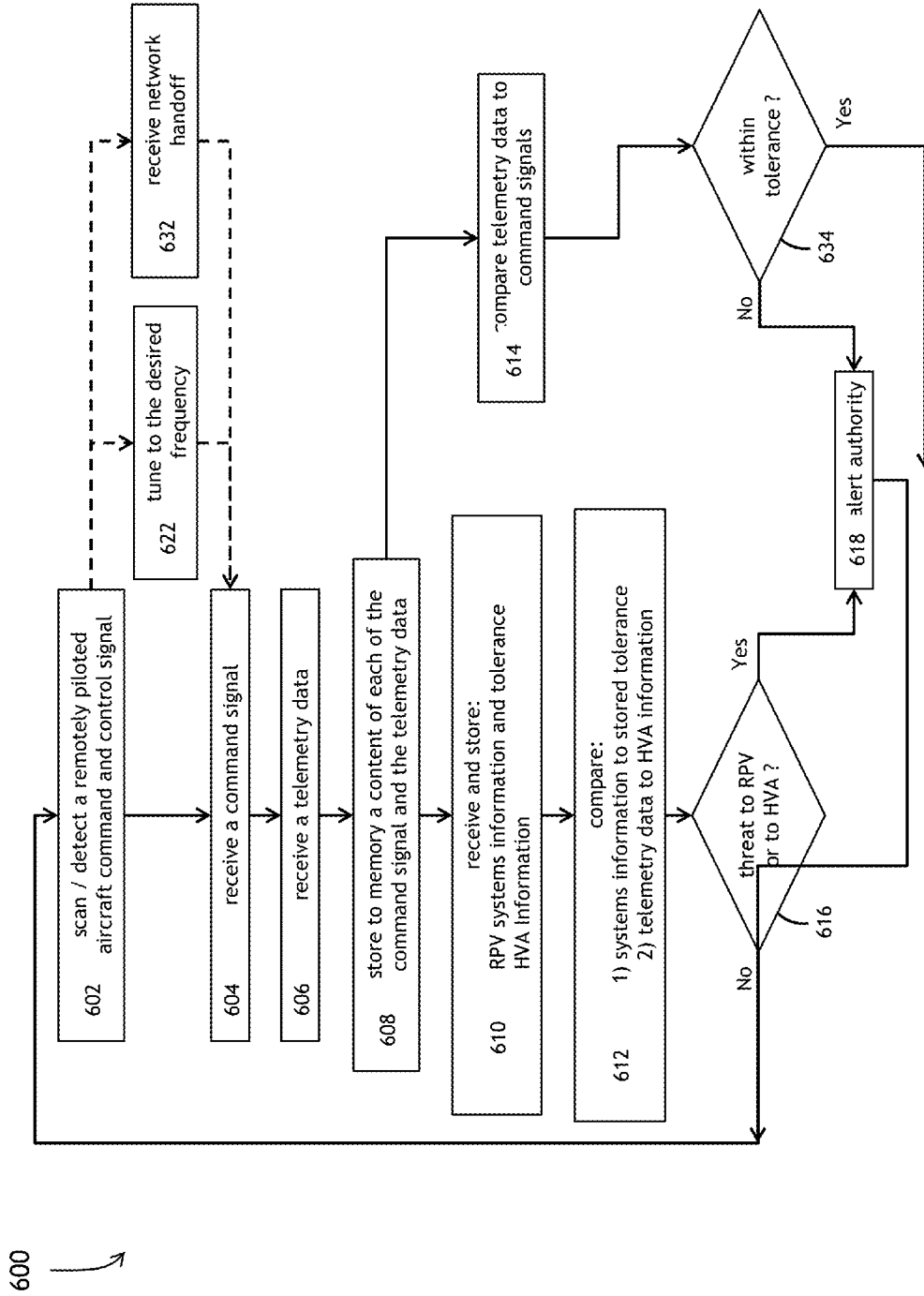


FIG. 6

1

**REMOTELY PILOTED AIRCRAFT  
TELEMETRY RECORDING USING THE  
COMMAND AND CONTROL DATA LINK  
SYSTEM AND RELATED METHOD**

FIELD OF THE INVENTION

Embodiments of the inventive concepts disclosed herein relate generally to recording telemetry data and state data associated with a remotely piloted vehicle. More particularly, embodiments of the inventive concepts disclosed herein provide a system and related method for reception/interception and storage of control data, telemetry data and a plurality of state parameters associated with control and status of an aerial vehicle.

BACKGROUND

State information may include a plurality of pieces of information relating to the status of an aerial vehicle. State information may include flight crew avionics input, flight control surface deflection, engine parameters (RPM, EGT), ambient cockpit voice communications, radio frequency communications and additional avionics parameters.

Traditional commercial air transport category aircraft may employ a flight data recorder mounted within the aerial vehicle to record such state information. These traditional data recorders inherently possess limitations in certain situations. Should an aerial vehicle be lost at sea, the traditional data recorders may remain unrecoverable at the bottom of the ocean for periods of time after immersion. Limited battery life in addition to salt water immersion may limit the effectiveness of traditional data recorders.

Flight data recorders and cockpit voice recorders mounted onboard air transport category aircraft may also record and store various parameters associated with the command and operation of the aircraft. However, there is no similar data recorder device available to a Remotely Piloted Vehicle (RPV) for storage of state and command information. Particularly due to the size and weight requirements of most RPVs, limited or no onboard space and weight is available to install a device capable of recording and storage of state information associated with the RPV.

Traditional Flight Operations Quality Assurance (FOQA) and Maintenance Operations Quality Assurance (MOQA) data may be extracted from traditional flight data recorders for follow on analysis and use to determine 1) operational trend data for training purposes and 2) maintenance trend data for pre-failure preventative maintenance. This cumbersome extraction requires a physical connection for maintenance personnel to board the aerial vehicle, download the FOQA/MOQA data to a portable drive and physically transfer the FOQA/MOQA data from the aerial vehicle for follow on analysis.

Further, in the event of a catastrophic loss of an aircraft, forces experienced during the loss events may cause the flight data recorder as well as the cockpit voice recorder to become damaged beyond repair and some or all of the recorded data may be lost. This damage may leave accident investigation teams without usable data from which they may reconstruct events prior to such a catastrophic loss.

The miniature size and complexity of the avionics systems for RPVs avionics systems may not allow traditional onboard recording of state data and command data usable for RPV safety assurance, accident investigation and health and maintenance architectures. A need exists for collection of state and command information necessary for safety

2

analysis, pilot training, currency, etc. Further, a need remains for a solution to this critical gap in remote recording and storage of command and control as well as aircraft state information related to manned and unmanned aerial vehicles.

SUMMARY

In one aspect, embodiments of the inventive concepts disclosed herein are directed to a system for remotely piloted aerial vehicle telemetry recording, the system may include a remote data recorder including a wired port and a wireless port. The remote data recorder may be configured for: detecting at least one Command and Control (C2) signal destined for at least one Remotely Piloted Vehicle (RPV) located remotely from the remote data recorder, the C2 signal transmitted via one of: a wired connection and a wireless radio frequency (RF) signal, the C2 signal operatively connecting a control station and the at least one RPV. The remote data recorder may receive a command signal via one of: the wired port and the wireless port, the command signal 1) generated by the control station, 2) destined for the at least one RPV, 3) including at least one associated RPV command, and 4) a portion of the C2 signal.

The remote data recorder may also receive a telemetry data signal via one of: the wired port and the wireless port, the telemetry data signal 1) generated by the at least one RPV, 2) destined for the control station, 3) including at least one associated RPV result, and 4) a portion of the C2 signal. A controller may be operatively coupled with the remote data recorder and with a memory, the memory storing non-transitory computer readable program code for processing the command signal and the telemetry data associated with the at least one RPV. The computer readable program code may include instructions for causing the controller to perform and direct steps.

The steps may include receiving the command signal and the telemetry data, receiving system parameters associated with at least one system onboard the at least one RPV, storing each of the command signal, the telemetry data, and the system parameters in the memory, comparing the at least one associated RPV result to 1) the at least one associated RPV command and 2) to the stored system parameters, determining a threat level associated with the at least one RPV, the threat level determined based on the comparing, and alerting an authority if the threat level rises above a predetermined threshold.

An additional embodiment of the inventive concepts disclosed herein may include a system wherein the at least one RPV is at least one of an unmanned aerial vehicle and a manned aerial vehicle and wherein the telemetry data includes at least one of a RPV position, a RPV altitude, a heading, a speed and status associated with at least one system onboard the at least one RPV.

An additional embodiment of the inventive concepts disclosed herein may include a system wherein the command signal and the at least one associated RPV command are generated by an operator of the control station.

An additional embodiment of the inventive concepts disclosed herein may include a system wherein the controller is further configured for: receiving and storing High Value Asset (HVA) information associated with at least one HVA external to the at least one RPV, comparing the HVA information to the telemetry data, and determining the threat level associated with the at least one RPV based on the comparing.

3

An additional embodiment of the inventive concepts disclosed herein may include a system wherein the threat level associated with the at least one RPV is associated with one of: 1) a threat to the at least one RPV, 2) a threat to the HVA external to the at least one RPV from a presence of the at least one RPV, 3) a threat to the at least one RPV from a system onboard the at least one RPV, and 4) a threat to a person onboard the at least one RPV.

An additional embodiment of the inventive concepts disclosed herein may include a system wherein comparing the at least one associated RPV command to the at least one associated RPV result further comprises a comparison of stored telemetry data with received telemetry data and a comparison of a RPV system desired performance with a RPV system current performance.

In a further aspect, embodiments of the inventive concepts disclosed herein are directed to a method for remotely piloted aerial vehicle telemetry recording, comprising: detecting, within a remote data recorder, at least one Command and Control (C2) signal destined for at least one Remotely Piloted Vehicle (RPV) located remotely from the remote data recorder, the detecting by a receiver offboard the at least one RPV, the remote data recorder configured with a wired port and a wireless port, the C2 signal operating within one of: a wired connection and a wireless radio frequency (RF) signal, the C2 signal operatively connecting a control station and the at least one RPV, receiving a command signal via one of: the wired port and the wireless port.

In embodiments, the command signal is 1) generated by the control station, 2) destined for the at least one RPV, 3) including at least one associated RPV command, and 4) a portion of the C2 signal, receiving a telemetry data signal via one of: the wired connection within the receiver and on the wireless RF signal via the receiver antenna. Also, the telemetry data signal may be 1) generated by the at least one RPV, 2) destined for the control station 3) including at least one associated RPV result, and 4) a portion of the C2 signal.

The method may receive the command signal and the telemetry data via a controller operatively coupled with the remote data recorder and with a memory, the memory storing non-transitory computer readable program code for processing the command signal and the telemetry data associated with the at least one RPV, the computer readable program code comprising instructions for causing the controller to perform and direct the steps of: receiving system parameters associated with at least one system onboard the at least one RPV, storing each of the command signal, the telemetry data, and the system parameters in the memory.

The method may compare the received at least one associated RPV result to 1) the at least one associated RPV command and 2) to the stored system parameters, determining a threat level associated with the at least one RPV, the threat level determined based on the comparing, and alerting an authority if the threat level rises above a predetermined threshold.

In a further aspect, embodiments of the inventive concepts disclosed herein are directed to a method for quality assurance tracking of an aerial vehicle comprising: detecting at least one Command and Control (C2) signal destined for at least one Remotely Piloted Vehicle (RPV), the C2 signal operatively connecting a control station and the at least one RPV, extracting from the detected C2 signal and storing to a memory, a command signal 1) generated by the control station, 2) destined for the at least one RPV, 3) including at least one associated RPV command, and 4) a portion of the C2 signal.

4

The method may also extract and store, from the detected C2 signal, a telemetry data signal 1) generated by the at least one RPV, 2) destined for the control station, 3) including at least one associated RPV result, and 4) a portion of the C2 signal, receiving and storing system parameters and operational parameters associated with at least one system onboard the at least one RPV, comparing the at least one associated RPV result to 1) the at least one associated RPV command and 2) to the stored system parameters, determining a threat level associated with the at least one RPV, the threat level determined based on the comparing, and alerting an authority if the threat level rises above a predetermined threshold.

An additional embodiment of the inventive concepts disclosed herein may include a method wherein the stored telemetry data is further aggregated by at least one of an aircraft type, an aircraft model, an aircraft manufacturer and a pilot training facility.

It is to be understood that both the foregoing general description and the following detailed description are exemplary and explanatory only and are not necessarily restrictive of the invention as claimed. The accompanying drawings, which are incorporated in and constitute a part of the specification, illustrate embodiments of the invention and together with the general description, serve to explain the principles of the invention.

#### BRIEF DESCRIPTION OF THE DRAWINGS

The numerous advantages of the inventive concepts disclosed herein may be better understood by those skilled in the art by reference to the accompanying figures in which:

FIG. 1 is a diagram of an exemplary system for RPV safety assurance via control and telemetry data recording in accordance with an embodiment of the inventive concepts disclosed herein;

FIG. 2 is a diagram of an exemplary wireless system for RPV safety assurance via control and telemetry data recording in accordance with an embodiment of the inventive concepts disclosed herein;

FIG. 3A is a diagram of an overview of a point to point terrestrial remote data recorder system exemplary of one embodiment of the inventive concepts disclosed herein;

FIG. 3B is a diagram of an overview of a worldwide networked remote data recorder system exemplary of one embodiment of the inventive concepts disclosed herein;

FIG. 4 is a diagram of a wireless remote data recorder system exemplary of one embodiment of the inventive concepts disclosed herein;

FIG. 5A is a diagram of a system for high value asset protection in accordance with one embodiment of the inventive concepts disclosed herein;

FIG. 5B is a diagram of a networked system for high value asset protection in accordance with one embodiment of the inventive concepts disclosed herein; and

FIG. 6 is a flowchart of a method for remote data recordation exemplary of one embodiment of the inventive concepts disclosed herein;

#### DETAILED DESCRIPTION

Reference will now be made in detail to the presently preferred embodiments of the inventive concepts disclosed herein, examples of which are illustrated in the accompanying drawings. The following description presents certain specific embodiments of the inventive concepts disclosed herein. However, these inventive concepts may be embodied

in a multitude of different ways as defined and covered by the claims. In this description, reference is made to the drawings wherein like parts are designated with like numerals throughout.

Embodiments of the inventive concepts disclosed herein are directed to a system and related method for reception and storage of a command and control (C2) data link between a control station and an aerial vehicle such as a Remotely Piloted Vehicle (RPV). The C2 data link may be designed for control and operation of the aerial vehicle from the control station. Within the C2 data link, the system herein receives and stores command signals from the control station as well as telemetry data associated with the aerial vehicle. In one embodiment, the system operates to receive and store the command data and telemetry data and compare the received telemetry data to the command data to ensure 1) positive reception of the command and 2) safe and positively controlled operation of the RPV from the control station.

In capturing the command signals and telemetry data, the systems herein may compare captured telemetry data to captured commanded signals to determine 1) if the command was received by the RPV and 2) if the RPV properly responded to the command. The systems herein may operate as a safety monitor of the RPV system.

In addition to the above, the systems and methods herein may compare the received telemetry data to 1) stored telemetry data to ensure the RPV is operating according to historical trends and 2) information associated with a high value asset (HVA) to determine if the RPV may pose a threat to the HVA. Should the comparisons reveal a threat to the RPV or to the HVA, the system may alert an authority to mitigate the threat through corrective action and post processing of the data to determine possible actions to counter the threat.

In addition, the system and method may aggregate data associated with specific aerial vehicle type or operator to support several safety initiatives, methods used to perform predictive maintenance planning and accident recreation and investigation.

#### REFERENCE CHART

No.	Description
<b>100</b>	System
<b>110</b>	Remotely Piloted Vehicle (RPV)
<b>120</b>	Control Station
<b>122</b>	Ground Control Interface
<b>130</b>	Remote Data Recorder
<b>132</b>	Controller
<b>134</b>	Processor
<b>136</b>	Memory
<b>138</b>	Application Interface
<b>140</b>	Terrestrial point to point Antenna
<b>142</b>	Remotely Piloted Vehicle Interface
<b>150</b>	Satellite Relay
<b>170</b>	Alert
<b>160</b>	Command and Control (C2) Data Link
<b>162</b>	Command Signals
<b>164</b>	Telemetry Data
<b>200</b>	Wireless Configuration
<b>210</b>	Local Remotely Piloted Vehicle (LRPV)
<b>212</b>	LRPV Telemetry Signal
<b>220</b>	Control Station Antenna
<b>230</b>	Remote Data Recorder Antenna
<b>232</b>	Remote Data Recorder RF Transmitter Receiver
<b>242</b>	Network Adapter
<b>250</b>	Network

<b>340</b>	Transoceanic Antenna
<b>400</b>	Covert Recordation
<b>500</b>	High Value Asset Configuration
<b>510</b>	Second RPV
<b>520</b>	Control Tower
<b>530</b>	Networked Remote Data Recorder
<b>550</b>	High Value Asset
<b>602</b>	Scan/Detect
<b>604</b>	Receive Command Signal
<b>606</b>	Receive Telemetry Data
<b>608</b>	Store to memory the Command and Telemetry Data
<b>610</b>	Receive and Store RPV System Information/HVA Information
<b>612</b>	Compare Systems Information and Telemetry Data
<b>614</b>	Compare Telemetry Data to Command Signals
<b>616</b>	Threat to RPV or to HVA
<b>618</b>	Alert Authority
<b>622</b>	Tune a RF Receiver
<b>632</b>	Receive a Network Handoff
<b>634</b>	Within tolerance

Referring to FIG. 1, a diagram of an exemplary system for RPV safety assurance via control and telemetry data recording in accordance with an embodiment of the inventive concepts disclosed herein is shown. The system **100** for RPV safety assurance may include a remote data recorder **130** configured for reception and recordation of a command and control (C2) data link **160**. Embodiments of the system **100** may operate to receive and record a plurality of information contained within the C2 data link **160** between a control station **120** and a remotely piloted vehicle (RPV) **110**. Within the C2 data link **160**, command signals **162** generated by the control station **120** and telemetry data **164** generated by the RPV **110** may be of particular value to an operator of the system **100**.

The telemetry data **164** may be generally defined as parameters associated with the state of the RPV **110** and systems thereon. The command signals **162** may be generally defined as those commands issued from the (ground) control station **120** directed to the RPV **110** for the operation of the RPV **110**. The C2 data link **160** may include bidirectional signals including 1) command signals **162** sent from the control station **120** to the RPV **110** and 2) telemetry data **164** sent from the RPV **110** to the control station **120**.

The command signals **162** may include an associated RPV command such as a commanded flight control inputs (e.g., a specific aileron input to command a specific angle of bank), commanded power settings, commanded track and navigation data and commanded weapons release, etc. The telemetry data **164** may include an associated RPV result of non-compliance with the associated RPV command. The telemetry data may include parameters associated with the RPV **110** for example: actual flight control surface position, actual RPV power setting, actual weapons load, systems status, or systems built in test (BIT) data.

Each of the command signals **162** and the telemetry data **164** may exist as state exchanges (data bus activity) via the C2 data link **160** between the control station **120** and the RPV **110**. This two way C2 data link **160** may provide data from which the state of the RPV **110** may be recreated. For example, correlation information sent from the RPV **110** to the control station, updates of aircraft state information, traffic awareness, flight control input, flight control deflection and C2 data link **160** performance may be some of the parameters available as part of the C2 data link **160** exchange. Generally, telemetry data **164** included in the C2 down links from the RPV **110** to the control center **120** may provide the platform state and C2 command signals **162**

within uplinks from the control center **120** to the RPV **110** may provide pilot induced changes. This information may be similar to that captured by traditional flight data recorders on commercial aircraft.

The system **100** may record much greater detail than may be found in a traditional flight data recordation system by monitoring and capturing the data from the C2 data link **160** as well as additional information links between the control station **120** and the RPV **110** (e.g. a sensor data link). Systems disclosed herein may operate within single channel point-to-point operations as well as multi-point local and global worldwide networked operations.

Embodiments of the inventive concepts disclosed herein may receive and store bus activity between a pilot control within the control station **120** on the ground and the avionics onboard the RPV **110** in the air. Embodiments may sample the data bus between the RPV **110** and the control station **120** C2 data link **160** and operate to record all the telemetry data **164** and command signals **162** available.

The system **100** may also receive High Value Asset (HVA) information associated with a HVA external to the at least one RPV as well as system parameters associated with at least one system onboard the RPV. Discussed in greater detail below in FIG. **5**, a HVA may include an asset of value where an authority may desire protection from the presence of the RPV **110**.

The system **100** may compare the received telemetry data **164** including an associated RPV result with a command signal **162** including an associated RPV command to determine if the control station **120** is positively commanding operation of the RPV **110**. A positive command indication may be the RPV result is directly in compliance with the RPV command. For example, should the RPV command be a climb from 8,000 feet to 9,000 feet, a positive indication that the control station **120** is in positive command of the RPV would include telemetry data **164** sent from the RPV via the C2 signal that the RPV was actually at 9,000 feet of altitude.

In addition, the system **100** may compare the received telemetry data to the stored system parameters. A controller **132** may operate to compare stored data to currently received data to determine if an anomaly is present within the currently received data. For example, during a plurality of previous flights, an engine temperature (e.g. exhaust gas temperature (EGT)) is maintaining an average of 350 degrees centigrade, and the currently received telemetry data indicates an EGT of 420 C, the system **100** may take action to notify a maintenance organization of the anomaly.

Further, the system **100** may receive HVA information associated with a HVA of concern. The HVA information may include for example, a static location of a building or runway, a dynamic location of a person or team of persons, and a value associated with the HVA. The system **100** may compare the received telemetry data to the HVA information and determine a threat level with associated with the RPV based on the comparison. For example, if the HVA is a building, the system **100** may use a RPV range from the building as a level of threat to the building. The closer the range the higher the threat level. For example, a range of 50 nautical miles (NM) may be a threat level 1, while a range of 20 NM may be a threat level 2, etc. As the threat level may rise to a predetermined threshold (here e.g., 30 miles range between the HVA and the RPV) the system **100** may alert an authority if the threat level rises above the 30 NM predetermined threshold.

In one embodiment, the remote data recorder **130** may operate to receive the C2 data link **160** and may include a

control interface **122**, the controller **132**, a processor **134**, a memory **136**, an application interface **138**, and a RPV interface **142**. External to the system **100**, a terrestrial point to point antenna **140** may be configured for line of sight transmission and reception of the C2 data link **160** with the RPV **110**. Optionally, the controller **132** may be omitted from the remote data recorder **130** and the processor **134** may function to carry out the steps of the system **100**.

In embodiments, the remote data recorder **130** may be configured to receive the C2 data link **160** from a manned ground control station **120** within a secure facility operating a distant RPV **110**. For example, a military pilot may operate a distant RPV **110** (e.g., Reaper, Global Hawk, Wasp, Sentinel) from the manned secure facility where the C2 data link **160** may travel a great distance before being received by the RPV **110**. At any point of the C2 data link **160**, the remote data recorder **130** may operate to receive and record the desired data.

For example, the manned control station **120** may be physically located within a secure air base in North Dakota, while the RPV **110** may be operating in a remote area of the Indian Ocean. The remote data recorder **130** may also be physically located within the secure air base in North Dakota and preferably within the same building as the manned control station **120** as secure data may be present in the C2 data link **160**. Alternatively, the remote data recorder **130** may be physically located nearby the terrestrial point to point antenna **140** and configured for recording as well as throughput of the C2 data link **160**.

In one embodiment of the system **100**, the command signals **162** of the C2 data link **160** may originate within the manned control station **120**, enter the remote data recorder **130** via the control interface **122** and be received by the controller **132**. While the command signals **162** may continue on to the RPV **110** via the terrestrial point to point antenna **140**, the remote data recorder records each command signal and associated command.

Similarly, the telemetry data **164** may follow an opposite path originating and transmitted from the RPV **110**, be routed via the terrestrial point to point antenna **140** to the RPV interface **142** and be received by the controller **132** for recording within the memory **136**.

During recording of the C2 data link **160**, including the command signals **162** and the telemetry data **164**, the processor **134** may read non-transitory computer readable program code stored within the memory **136**. The computer readable program code may cause the processor **134** to issue commands to the controller **132** to store desired parameters of the C2 data link to the memory **136**. The controller **132** may determine a threat level associated with the RPV be of sufficient merit to warrant an alert **170** sent so that an operator may take corrective action.

The operator may also access the stored parameters from the memory **136** via the application interface **138**. Conversely, the application interface **138** may be continuously connected to an application residing external to the remote data recorder **130**. In this manner, the remote data recorder **130** may record and make available to the external application each desired parameter associated with the command signals **162** and the telemetry data **164**.

In one embodiment, the remote data recorder may receive the telemetry data **164** from the RPV **110** and the command signals from the control station **110** and record one or more of the following (including, but not limited to) parameters:

1.	Time
2.	Pressure Altitude
3.	Indicated or Calibrated airspeed
4.	Heading
5.	Vertical Acceleration
6.	Pitch Attitude
7.	Roll Attitude
8.	Manual Radio Transmitter Keying
9.	Thrust/Power on each engine
10.	Autopilot Engagement
11.	Longitudinal Acceleration
12.	Pitch controls position
13.	Lateral control positions
14.	Yaw control positions
15.	Pitch control surfaces position
16.	Lateral control surfaces position
17.	Yaw control surfaces position
18.	Lateral Acceleration
19.	Pitch Trim Surface Position
20.	Trailing Edge Flap Cockpit Control Selection
21.	Leading Edge Flap Cockpit Control Selection
22.	Each Thrust Reverser Position
23.	Ground Spoiler Position or Speed Brake Selection
24.	Outside Air Temperature or Total Air Temperature
25.	Autopilot/Autothrottle/Auto Flight Control System Mode and Engagement Status
26.	Radio Altitude
27.	Localizer Deviation, MLS Azimuth, or GPS Lateral Deviation
28.	Glideslope Deviation, MLS Elevation, or GPS Vertical Deviation
29.	Marker Beacon Passage
30.	Master Warning
31.	Air/ground sensor
32.	Angle of Attack
33.	Hydraulic Pressure
34.	Groundspeed
35.	Ground proximity warning system
36.	Landing Gear Position
37.	Drift Angle
38.	Wind Speed and Direction
39.	Latitude and Longitude
40.	Stick shaker and pusher activation
41.	Windshear Detection
42.	Throttle/power lever position
43.	Additional Engine Parameters
44.	Traffic Alert and Collision Avoidance System (TCAS)
45.	DME 1 and 2 Distance
46.	Nay 1 and 2 Selected Frequency
47.	Selected barometric setting
48.	Selected Altitude
49.	Selected speed
50.	Selected Mach
51.	Selected vertical speed
52.	Selected heading
53.	Selected flight path
54.	Selected decision height
55.	EFIS display format
56.	Multi-function/Engine Alerts Display format
57.	Thrust command
58.	Thrust target
59.	Fuel quantity in CG trim tank
60.	Primary Navigation System Reference
61.	Ice Detection
62.	Engine warning each engine vibration
63.	Engine warning each engine over temp
64.	Engine warning each engine oil pressure low
65.	Engine warning each engine over speed
66.	Yaw Trim Surface Position

-continued

67.	Roll Trim Surface Position
68.	Brake Pressure
69.	Brake Pedal Application
70.	Yaw or sideslip angle
71.	Engine bleed valve position
72.	De-icing or anti-icing system selection
73.	Computed center of gravity
74.	AC electrical bus status
75.	DC electrical bus status
76.	APU bleed valve position
77.	Hydraulic Pressure
78.	Loss of cabin pressure
79.	Computer failure (critical flight and engine control systems)
80.	Heads-up display
81.	Para-visual display
82.	Cockpit trim control input position-pitch
83.	Cockpit trim control input position
84.	Cockpit trim control input position
85.	Trailing edge flap and cockpit flap control position
86.	Leading edge flap and cockpit flap control position
87.	Ground spoiler position and speed brake selection
88.	All cockpit flight control input forces (control wheel, control column, rudder pedal)
89.	Yaw damper status
90.	Yaw damper command
91.	Standby rudder valve status
92.	Link performance
93.	Signal-to-noise ratio
94.	Error Rates
95.	Link Degraded status

Referring to FIG. 2, a diagram of an exemplary wireless system for RPV safety assurance via control and telemetry data recording in accordance with an embodiment of the inventive concepts disclosed herein is shown. The system **200** may include a wireless system configured to operate to receive RF signals associated with a wireless C2 data link **160** between the control station **120** and a Local Remotely Piloted Vehicle (LRPV) **210**.

Here, the control station **120** may be fitted with a control station antenna **220** configured to transmit and receive the C2 data link **160** via a RF transmission and reception. As above, the C2 data link **160** may comprise both the command signals **162** as well as the telemetry data **164**. The remote data recorder **130** may be configured with a remote data recorder antenna **230** configured for reception of both the command signals **162** generated by the control station **120** as well as the telemetry data **164** generated by the LRPV **210**. Also, in this wireless configuration **200**, the remote data recorder **130** may be configured with a remote data recorder radio frequency transmitter receiver **232** to receive and decode the RF signals.

In this wireless configuration **200**, the C2 data link **160** may travel directly from the control station **120** to the LRPV **210** without traversing the remote data recorder **130**. Here the remote data recorder **130** may operate overtly or covertly to gather the signals from each of the control station **120** and the LRPV **210**.

The wireless C2 data link **160** may operate on a variety of frequencies. One goal of the inventive concepts disclosed herein is to allow frequency agility enabling the remote data recorder **130** to operate within any frequency band within which the C2 data link **160** may operate. For example, a C-Band (4 to 8 GHz), an L-Band (1 to 2 GHz) and each of

## 11

the satellite Bands (IEEE radio bands X Ku K Ka and equivalent) may be some of the frequency bands wireless configuration **200** may function to receive and decode.

In embodiments, the controller **132** and radio frequency transmitter receiver **232** may operate in concert with processor **134** and memory **136** as a Software Defined Radio (SDR) configured for reception as well as transmission of the RF command signals **162** and the RF telemetry data **164**.

Referring to FIG. 3A, a diagram of an overview of a point to point terrestrial remote data recorder system exemplary of one embodiment of the inventive concepts disclosed herein is shown. The system **300** may include a terrestrial point to point antenna **140** to relay the C2 data link **160** from a manned aerial vehicle **310** operating within range of the terrestrial point to point antenna **140**.

In embodiments, the system **300** may operate to connect the remote data recorder **130** with the manned aerial vehicle **310** via the C2 data link **160**. In a situation where the manned aerial vehicle **310** may be a manned and piloted aerial vehicle, the system **300** may operate to 1) record command data and state data as above, and 2) be ready to apply a command interface (e.g., aircraft flight control) with the flight control data bus onboard the manned aerial vehicle **310**. For example, some aircraft may employ a primary flight control data bus (e.g., ARINC 429/629/664/AFDX/Mil-STD-1553 data bus) for transmission of flight control input from an cockpit onboard the manned aerial vehicle **310** to the flight control computers onboard the manned aerial vehicle **310**. In embodiments, a situation may be present where a distressed manned aerial vehicle may request or be commanded to allow the remote data recorder **130** direct contact with the flight control data bus via the C2 data link **160**.

For example, where the threat level may be associated with a G-induced or Hypoxia induced loss of consciousness situation, an onboard pilot may be unable to control the manned aerial vehicle **310**. Here, the manned aerial vehicle **310** may automatically request direct contact via the C2 data link between the control station **120** and the primary flight control data bus via the remote data recorder **130**. In this manner, the controller **132** may access the stored data within memory **136** and allow an offboard pilot within the control station **120** to provide input directly to the flight control computers onboard the manned aerial vehicle.

In addition, the system **300** recordation of the C2 data link **160** provided by the manned aerial vehicle **310** may enable the system **300** to provide data for a secondary application concerning aviation safety and maintenance analysis. The system **300** may provide a FOQA system with aggregated per fleet data enabling operational changes as well as operational safety analysis. Further, the system **300** may provide MOQA system with data aggregated on a per module basis to enable correlation of telemetry data with suspected failure data to pinpoint actual module failures versus false indications of a failure.

For example, each Boeing 757 may be fitted with avionics and communication systems to enable continuous C2 data link **160** communication with the remote data recorder **130**. In this manner, the system **100** may record each aspect of each 757 flight and may aggregate the data for operator and manufacturer use. A FOQA system may, for example, analyze the aggregated data of each landing of each Boeing 757 to determine additional landing training requirements of 757 pilots.

Further, the C2 data link **160** may provide the system **300** with telemetry data associated with individual modules onboard the aerial vehicle. Each telemetry data **164** trans-

## 12

mission may include a status of one or more systems onboard the manned aerial vehicle **310** as well as the RPV **110**. For example, the telemetry data **164** may include a report of each hydraulic system quantity and pressure onboard the aerial vehicle. Should an aileron actuator fail and be reported to a maintenance organization, the maintenance organization may analyze the hydraulic system data recorded by the system **100** to determine a possible cause of the aileron actuator failure. In addition, the aileron actuator failure may be a false indication to a flight crew reporting the failure and accurate analysis of the aggregated the system **100** MOQA data may reveal the actual problem being a low hydraulic system quantity.

In addition, the system **300** aggregated data may be specifically configured for use by a safety analysis program. For example, an Aviation Safety Information Analysis and Sharing (ASIAS) system may realize a value within the system **300** aggregated data for safety analysis.

Referring to FIG. 3B, a diagram of an overview of a worldwide networked remote data recorder system exemplary of one embodiment of the inventive concepts disclosed herein is shown. Transoceanic antenna **340** may route the C2 data link **160** beyond a line of sight to the distant RPV **310** via a satellite vehicle **150** in orbit.

Referring to FIG. 4, a diagram of a wireless remote data recorder system exemplary of one embodiment of the inventive concepts disclosed herein is shown. A covert recordation embodiment **400** of the inventive concepts disclosed herein may enable recording of the C2 data link **160** without knowledge of an operator of control station **120**. For example, the remote data recorder may be concealed from view of an operator of a control station **120** and specifically configured for covert reception of the C2 data link **160**. For example, the remote data recorder may be physically located within a cellular antenna structure or behind a visual barrier.

Referring to FIG. 5A, a diagram of a system for high value asset protection in accordance with one embodiment of the inventive concepts disclosed herein is shown. A high value asset configuration **500** may enable the remote data recorder **130** to provide protection of a high value asset **550** (here a runway environment).

One or more of the remote data recorder **130** may be placed in multiple locations proximal to the high value asset **550** to ensure accurate and possibly duplicate recordation of the C2 data link **160** between the control station **120** and the RPV **110**. In one embodiment of the configuration **500**, a remote data recorder **130** may be associated with a control tower **520** and able to record multiple streams of one or more C2 data links **160** between one or more control stations **120** and one or more RPVs **110**.

The system **300** may further receive and record the telemetry data **164** and command signals **162** associated with a second RPV **510**. In this example, a single or a plurality of remote data recorders **130** may be selectively placed around the HVA to 1) receive and record the telemetry data **164** and command signals **162** from a plurality of nearby RPVs and 2) analyze a threat level associated with the RPV whether the threat level is associated with the safety of the RPV **210** and **510** or the threat level is associated with proximity of each of the RPV **210** and **510** to the HVA **550**.

As one analysis tool the system **100** may use in determining a threat level, the system **100** may use a Risk Class delineated by a governmental or international aviation authority. One such risk class may include a class of risk associated with a weight, an altitude capability and a speed capability of the RPV. For example, a RPV of greater weight, altitude and speed capability may pose a greater

13

threat to the HVA **550**. For example, the system **100** may enable the alert **170** should a RPV of the highest threat class (e.g. NATO class III) be operating within the class B airspace associated with an international airport HVA.

Referring to FIG. **5B**, a diagram of a networked system for high value asset protection in accordance with one embodiment of the inventive concepts disclosed herein is shown. The networked high value asset configuration **500** may enable the multiple remote data recorders **130** to collaborate with one another to share data concerning each of the RPVs **110** within range of the individual remote data recorder **130**. For example, a first remote data recorder **130** may receive and record the telemetry data **164** and command signals **162** contained within the C2 data link **160**. As a first RPV may move away from the first remote data recorder **130** toward a second remote data recorder **530**, the first remote data recorder **130** may transmit connectivity information to the second remote data recorder **530** to enable the second remote data recorder **530** to acquire and record the telemetry data **164** and command signals **162** from the first RPV **210**.

In one example, the networked high value asset configuration **500** may share RPV connectivity information between a plurality of remote data recorders **130**. For example, a RPV location and heading, a frequency of the C2 data link **160** in use by the RPV frequency, a presence of a second RPV **510** operating in the vicinity, a ground speed and a closure with the HVA may be some of the connectivity information shared between the networked remote data recorders **130**.

Referring to FIG. **6**, a flowchart of a method for remote data recordation exemplary of one embodiment of the inventive concepts disclosed herein is shown. Method **600** may begin at a step **602**, with scan and/or detect a RPV C2 signal, and at a step **622** optionally tune to one or more desired frequencies to receive the C2 signal. Additionally and optionally, at a step **632**, method **600** may receive a network handoff from an additional networked remote data recorder. At a step **604**, the method **600** may receive a command signal and further receive telemetry data at a step **606**.

Method **600** may, at a step **608**, record to memory a content of each of the command signal and the telemetry data. At a step **614**, the method may compare the received telemetry data to the command signals, and, at a step **634**, if the comparison reveals the telemetry data is within a tolerance of the command signals, the method may return to step **602**. However, if the comparison **634** reveals telemetry data outside of the tolerance, the method may, at a step **618**, alert an authority for corrective action and return to the step **602** to continue operation.

At a step **610** the method may receive and store both 1) information concerning a high value asset and 2) information and tolerances associated with a system onboard the RPV. At a step **612**, the method may compare the systems information to a stored tolerance and compare the telemetry data to the HVA information. A step **616** may query if the comparison **612** reveals a threat to the RPV or to the HVA. If the answer to query **616** is negative, the method may return to the step **602** and scan/detect additional signals. However, if the answer to query **616** is positive, the method may proceed to the step **618** with alerting an authority to the threat associated with the RPV and/or the HVA. For example, a runway environment may be one example of a HVA from which an authority may desire protection from the threat of a presence of a RPV within an approach corridor. Should a RPV be present within the approach corridor of the runway, system **100** may alert the authority of the RPV presence to enable aircraft landing on the runway to mitigate the threat with alternate procedures.

14

In an additional example, should the comparison **612** of stored systems information to currently received telemetry data reveal a current spike in oil pressure, the threat level may be associated with the high oil pressure being a threat to the safety of the RPV. Here, the system **100** may alert a maintenance authority to the presence of the oil pressure threat to the RPV and the maintenance authority may take appropriate action.

## CONCLUSION

Specific blocks, sections, devices, functions, processes and modules may have been set forth. However, a skilled technologist will realize that there are many ways to partition the system, and that there are many parts, components, processes, modules or functions that may be substituted for those listed above.

Those having skill in the art will recognize that the state of the art has progressed to the point where there may be little distinction left between hardware, software, and/or firmware implementations of aspects of systems; the use of hardware, software, and/or firmware is generally (but not always, in that in certain contexts the choice between hardware and software can become significant) a design choice representing cost vs. efficiency tradeoffs.

Additionally, implementations of embodiments disclosed herein may include executing a special-purpose instruction sequence or invoking circuitry for enabling, triggering, coordinating, requesting, or otherwise causing one or more occurrences of virtually any functional operations described herein.

While particular aspects of the inventive concepts disclosed herein have been shown and described, it will be apparent to those skilled in the art that, based upon the teachings herein, changes and modifications may be made without departing from the inventive concepts described herein and their broader aspects and, therefore, the appended claims are to encompass within their scope all such changes and modifications as are within the true spirit and scope of the subject matter described herein.

With respect to the appended claims, those skilled in the art will appreciate that recited operations therein may generally be performed in any order. Also, although various operational flows are presented in a sequence(s), it should be understood that the various operations may be performed in other orders than those which are illustrated, or may be performed concurrently.

What is claimed is:

1. A system for remotely piloted aerial vehicle telemetry recording, comprising:

a remote data recorder including a wired port and a wireless port, the remote data recorder configured for: detecting at least one Command and Control (C2) signal destined for at least one Remotely Piloted Vehicle (RPV) located remotely from the remote data recorder, the C2 signal transmitted via one of: a wired connection and a wireless radio frequency (RF) signal, the C2 signal operatively connecting a control station and the at least one RPV;

receiving a command signal via one of: the wired port and the wireless port, the command signal 1) generated by the control station, 2) destined for the at least one RPV, 3) including at least one associated RPV command, and 4) a portion of the C2 signal; receiving a telemetry data signal via one of: the wired port and the wireless port, the telemetry data signal 1) generated by the at least one RPV, 2) destined for



15

the control station, 3) including at least one associated RPV result, and 4) a portion of the C2 signal; a controller operatively coupled with the remote data recorder and with a memory, the memory storing non-transitory computer readable program code for processing the command signal and the telemetry data associated with the at least one RPV, the computer readable program code comprising instructions for causing the controller to perform and direct the steps of:

receiving the command signal and the telemetry data; receiving system parameters associated with at least one system onboard the at least one RPV; storing each of the command signal, the telemetry data, and the system parameters in the memory; comparing the at least one associated RPV result to 1) the at least one associated RPV command and 2) to the stored system parameters; determining a threat level associated with the at least one RPV, the threat level determined based on the comparing; and alerting an authority if the threat level rises above a predetermined threshold.

2. The system for remotely piloted aerial vehicle telemetry recording of claim 1, wherein the at least one RPV is at least one of an unmanned aerial vehicle and a manned aerial vehicle.

3. The system for remotely piloted aerial vehicle telemetry recording of claim 1, wherein the telemetry data includes at least one of a RPV position, a RPV altitude, a heading, a speed and status associated with at least one system onboard the at least one RPV.

4. The system for remotely piloted aerial vehicle telemetry recording of claim 1, wherein the command signal and the at least one associated RPV command are generated by an operator of the control station.

5. The system for remotely piloted aerial vehicle telemetry recording of claim 1, wherein the controller is further configured for:

receiving and storing High Value Asset (HVA) information associated with at least one HVA external to the at least one RPV;

comparing the HVA information to the telemetry data; and determining the threat level associated with the at least one RPV based on the comparing.

6. The system for remotely piloted aerial vehicle telemetry recording of claim 5, wherein the threat level associated with the at least one RPV is associated with one of: 1) a threat to the at least one RPV, 2) a threat to the HVA external to the at least one RPV from a presence of the at least one RPV, 3) a threat to the at least one RPV from a system onboard the at least one RPV, and 4) a threat to a person onboard the at least one RPV.

7. The system for remotely piloted aerial vehicle telemetry recording of claim 1, wherein comparing the at least one associated RPV command to the at least one associated RPV result further comprises a comparison of stored telemetry data with received telemetry data and a comparison of a RPV system desired performance with a RPV system current performance.

8. A method for remotely piloted aerial vehicle telemetry recording, comprising:

detecting, within a remote data recorder, at least one Command and Control (C2) signal destined for at least one Remotely Piloted Vehicle (RPV) located remotely from the remote data recorder, the detecting by a receiver offboard the at least one RPV, the remote data

16

recorder configured with a wired port and a wireless port, the C2 signal operating within one of: a wired connection and a wireless radio frequency (RF) signal, the C2 signal operatively connecting a control station and the at least one RPV;

receiving a command signal via one of: the wired port and the wireless port, the command signal 1) generated by the control station, 2) destined for the at least one RPV, 3) including at least one associated RPV command, and 4) a portion of the C2 signal;

receiving a telemetry data signal via one of: the wired connection within the receiver and on the wireless RF signal via the receiver antenna, the telemetry data signal 1) generated by the at least one RPV, 2) destined for the control station 3) including at least one associated RPV result, and 4) a portion of the C2 signal;

receiving the command signal and the telemetry data via a controller operatively coupled with the remote data recorder and with a memory, the memory storing non-transitory computer readable program code for processing the command signal and the telemetry data associated with the at least one RPV, the computer readable program code comprising instructions for causing the controller to perform and direct the steps of:

receiving system parameters associated with at least one system onboard the at least one RPV;

storing each of the command signal, the telemetry data, and the system parameters in the memory;

comparing the received at least one associated RPV result to 1) the at least one associated RPV command and 2) to the stored system parameters;

determining a threat level associated with the at least one RPV, the threat level determined based on the comparing; and

alerting an authority if the threat level rises above a predetermined threshold.

9. The method of claim 8, wherein the at least one RPV is at least one of an unmanned aerial vehicle and a manned aerial vehicle.

10. The method of claim 8, wherein the telemetry data is at least one of a RPV position, a RPV altitude, a heading, a speed and status associated with at least one system onboard the at least one RPV.

11. The method of claim 8, wherein the command signal and the at least one associated RPV command are generated by an operator of the control station.

12. The method of claim 8, further including:

receiving High Value Asset (HVA) information associated with a HVA external to the at least one RPV, the receiving includes reception via one of a wireless data connection, a wired data connection and a periodic data transfer to the memory;

storing the HVA information in the memory;

comparing the received telemetry data to the HVA information; and

determining the threat level associated with the at least one RPV based on the comparing.

13. The method of claim 8, wherein the threat level is associated with one of: 1) a threat to the at least one RPV, 2) a threat to the HVA external to the at least one RPV from a presence of the at least one RPV, 3) a threat to the at least one RPV from a system onboard the at least one RPV, and 4) a threat to a person onboard the at least one RPV.

14. The method of claim 8, wherein comparing the received command signal and the received telemetry data to the stored system parameters further comprises a compari-

17

son of stored telemetry data with received telemetry data and a comparison of a RPV system desired performance with a RPV system current performance.

15. A method for quality assurance tracking of an aerial vehicle comprising:

detecting at least one Command and Control (C2) signal destined for at least one Remotely Piloted Vehicle (RPV), the C2 signal operatively connecting a control station and the at least one RPV;

extracting from the detected C2 signal and storing to a memory, a command signal 1) generated by the control station, 2) destined for the at least one RPV, 3) including at least one associated RPV command, and 4) a portion of the C2 signal;

extracting from the detected C2 signal and storing to the memory, a telemetry data signal 1) generated by the at least one RPV, 2) destined for the control station, 3) including at least one associated RPV result, and 4) a portion of the C2 signal;

receiving and storing system parameters and operational parameters associated with at least one system onboard the at least one RPV;

comparing the at least one associated RPV result to 1) the at least one associated RPV command and 2) to the stored system parameters;

determining a threat level associated with the at least one RPV, the threat level determined based on the comparing; and

18

alerting an authority if the threat level rises above a predetermined threshold.

16. The method for quality assurance tracking of an aerial vehicle of claim 15, wherein the at least one RPV is at least one of an unmanned aerial vehicle and a manned aerial vehicle.

17. The method for quality assurance tracking of an aerial vehicle of claim 15, wherein the telemetry data is at least one of a RPV position, a RPV altitude, a heading, a speed and status associated with at least one system onboard the at least one RPV.

18. The method for quality assurance tracking of an aerial vehicle of claim 15, wherein the stored telemetry data is further aggregated by at least one of an aircraft type, an aircraft model, an aircraft manufacturer and a pilot training facility.

19. The method for quality assurance tracking of an aerial vehicle of claim 15, wherein the telemetry data is received from a plurality of unmanned and manned aerial vehicles.

20. The method for quality assurance tracking of an aerial vehicle of claim 15, wherein the threat level is associated with one of: a threat to the at least one RPV from a system onboard the at least one RPV, a threat to a High Value Asset (HVA) external to the at least one RPV from a presence of the at least one RPV, and a threat to a person onboard the at least one RPV.

\* \* \* \* \*